

HYDRAULIC BREAKER

Parts Manual

PMM15BSENG.613

Serial No.

BT15A0005-UP

The logo for Bretec M15 is displayed vertically on a dark blue background. The word "Bretec" is written in a light blue, sans-serif font, and "M15" is written in a bold, red, sans-serif font. A red triangle is positioned to the left of the "B" in "Bretec", pointing towards it.

Bretec M15

TABLE OF CONTENTS

1. Housing unit BOX	4
2. Impact unit	6
3. Seal set	8
4. Service kit	10
5. Service kit 2	11

GENUINE BRETEC SPARE PARTS

Bretec genuine spare parts are designed and manufactured by using the latest technological knowledge and engineering skills. Bretec spare parts are made of the best available materials with the most advanced manufacturing techniques.

It is important that you use only genuine Bretec spare parts, to ensure easy operation, maintenance and repair of the product. Please note that eventual warranty claims will be handled only if you have used genuine Bretec parts in your Bretec product.

LOCATION OF THE SERIAL NUMBER

It's important to make correct reference to the serial number of the product when ordering spare parts. Identification of serial number is the only proper means of maintaining and identifying parts for a specific product. The location of equipment serial number is pointed in "Operation and maintenance" manual.

SPARE PART ORDERS

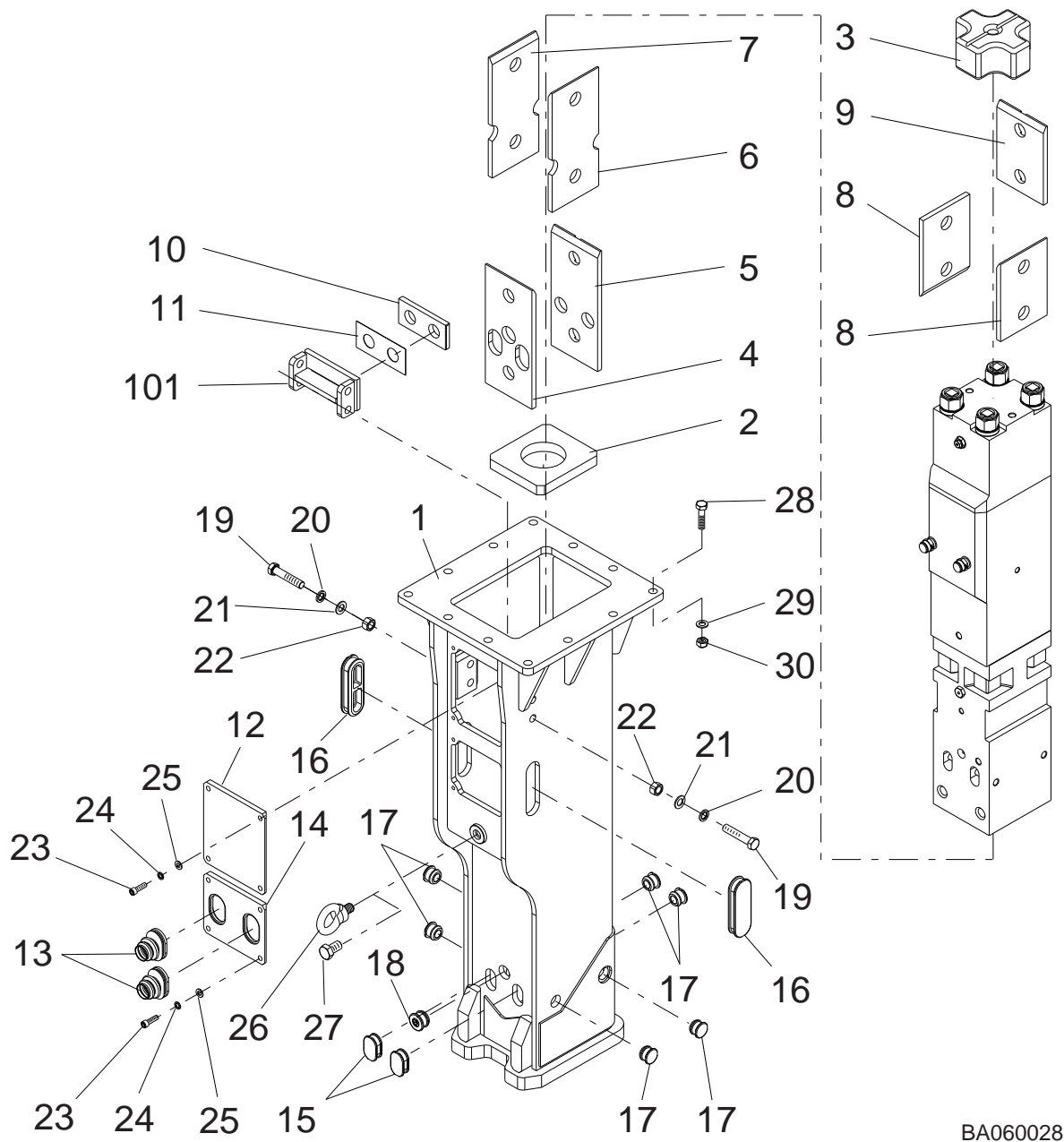
Quick spare part deliveries are secured by exact orders.

Required information:

- Name of customer and contact person
 - Order number (when available)
 - Delivery address
 - Mode of delivery (air mail etc.)
 - Required delivery date
 - Invoicing address
 - Model and serial number of the product
 - Name, number and required amount of spare parts
-

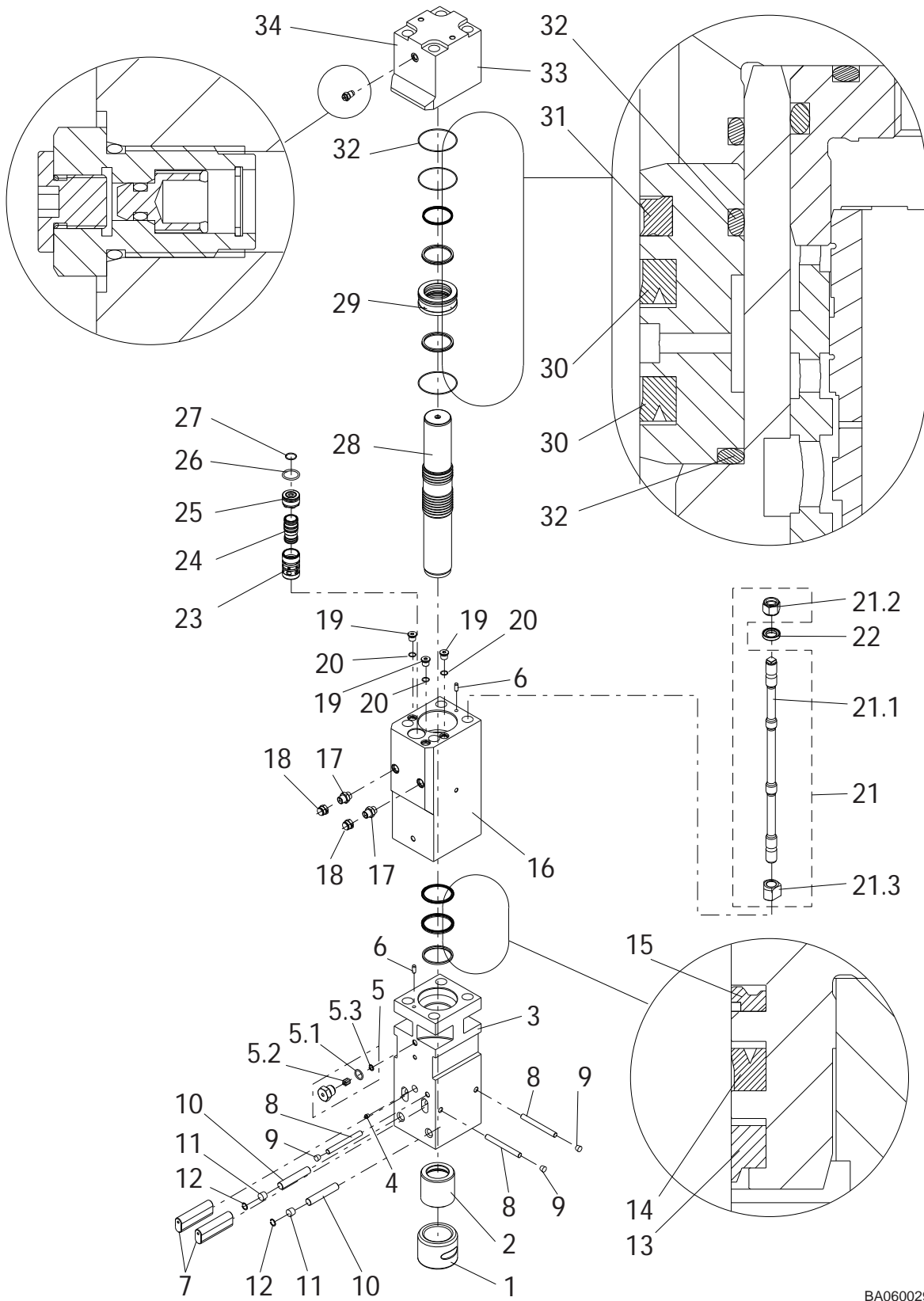
1. Parts

1. HOUSING UNIT BOX



Item	Description	Part no.	Specification	Note	Qty
1	Housing (incl. part 101)	171593			1
2	Pad	170169			1
3	Buffer	170170			1
4	Wear plate	170173			1
5	Wear plate	170174			1
6	Wear plate	170172			1
7	Wear plate	170171			1
8	Wear plate	170175			2
9	Wear plate	171538			1
10	Wear plate	171553			1
11	Shim plate	171552			1
12	Shield plate	170177			1
13	Hose guide	171447			2
14	Cover	170176			1
15	Rubber plug	170188			2
16	Rubber plug	170187			2
17	Rubber plug	170189			6
18	Rubber plug	170153			1
19	Hex. screw	954277	M20x100-10.9 ISO 4014		4
20	Spring washer	953631	A20 DIN 127		4
21	Washer	954278	M20 ISO 7089		4
22	Nut	954279	M20x2-10 DIN 1587		4
23	Hex. socket screw	90564	M12x40-8.8 ISO 4762		8
24	Spring washer	91018	A12 DIN 127		8
25	Washer	903211	12-140 HV ISO 7089		8
26	Lifting eye	90605	M24 DIN 580		1
27	Hex. screw	903242	M24x40-8.8 ISO 4017		1
23	Hex. screw	91022	M20x90-8.8 ISO 4014		12
24	Lock washer	91010	M20 NORD-LOCK		24
25	Nut	91017	M20-8 ISO 4032		12
201	Label set (incl. part 202)	171540			1
202	Safety label set	165697	english		1

2. IMPACT UNIT

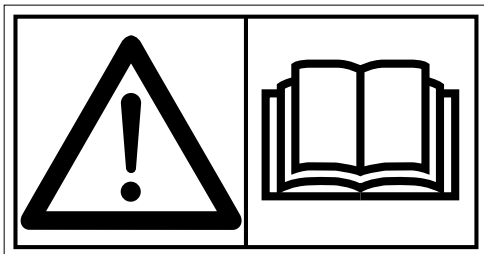
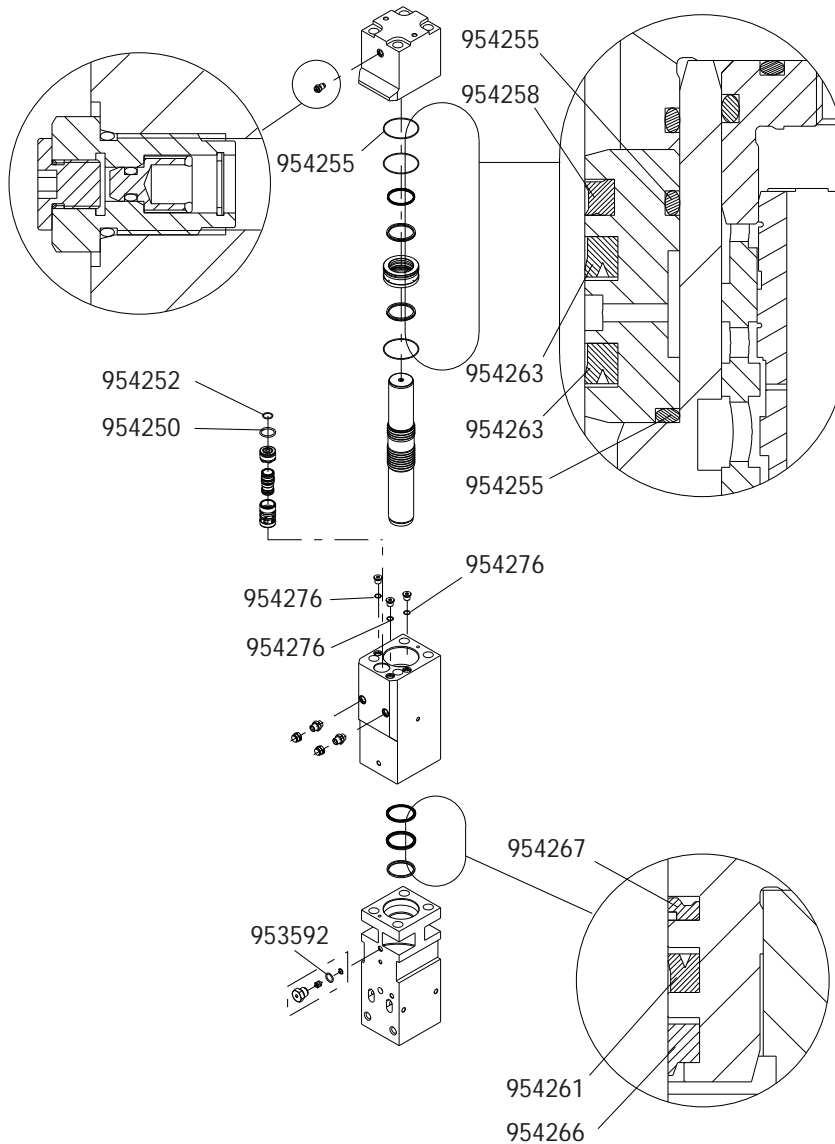


BA060029

Item	Description	Part no.	Specification	Note	Qty
1	Lower tool bushing	170351			1
2	Upper tool bushing	170348			1
3	Front head	170339			1
4	Grease nipple	90200			1
5	Breather (incl. parts 5.1-5.3)	171440			1
5.1	O-ring	953592		*	1
5.2	Spool	171442			1
5.3	Retaining ring	953371	12x1 DIN 472		1
6	Parallel pin	170581			2
7	Tool retaining pin	170580			2
8	Retaining pin	170582			3
9	Rubber plug	170585			3
10	Retaining pin	170583			2
11	Rubber plug	170584			2
12	Retaining ring	953785	27x1.2 DIN 472		2
13	Wiper	954266		*	1
14	Seal	954261		*	1
15	Seal	954267		*	1
16	Cylinder	170366			1
17	Adapter	903281			2
18	Cap	954272			2
19	Plug	170191			3
20	O-ring	954276		*	3
21	Tie rod (incl. parts 21.1-21.3)	K50B15			4
21.1	Tie rod				1
21.2	Nut				1
21.3	Nut				1
22	Washer	170513			4
23	Bushing	171413			1
24	Distributor	171412			1
25	Distributor cover	171414			1
26	O-ring	954250		*	1
27	O-ring	954252		*	1
28	Piston	170345			1
29	Seal carrier	170342			1
30	Seal	954263		*	2
31	Seal	954258		*	1
32	O-ring	954255		*	3
33	Back head	170333			1
34	Accumulator filling plug	171443			1
	*) Are included in seal set				

3. SEAL SET

Seal set 171546

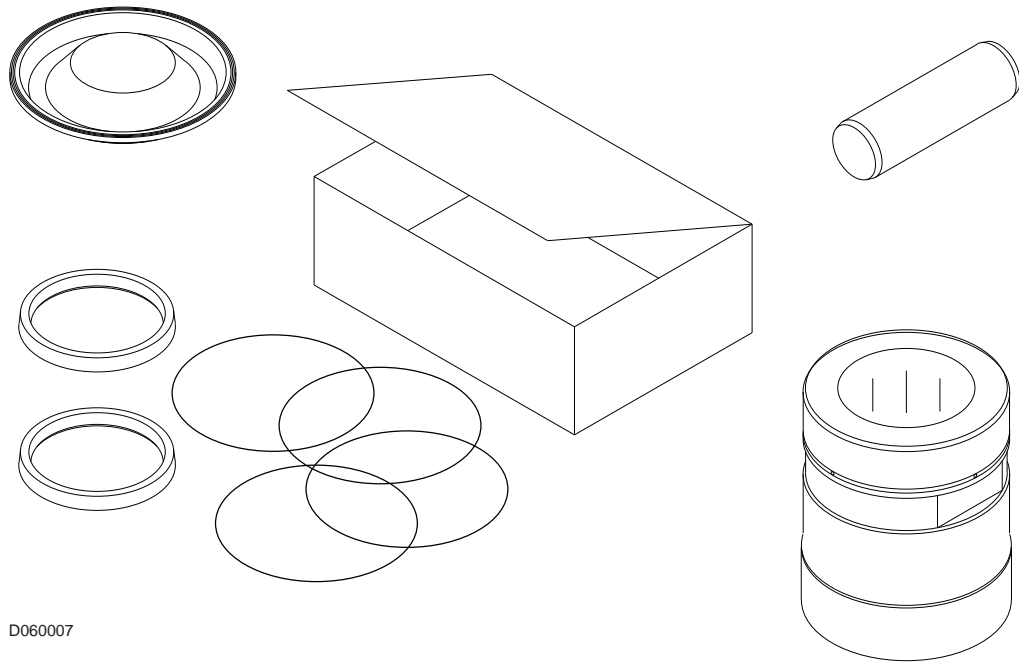


This summary only indicates the position of the seals. It must NOT be used as assembly instruction. Read the manual.

BA060030

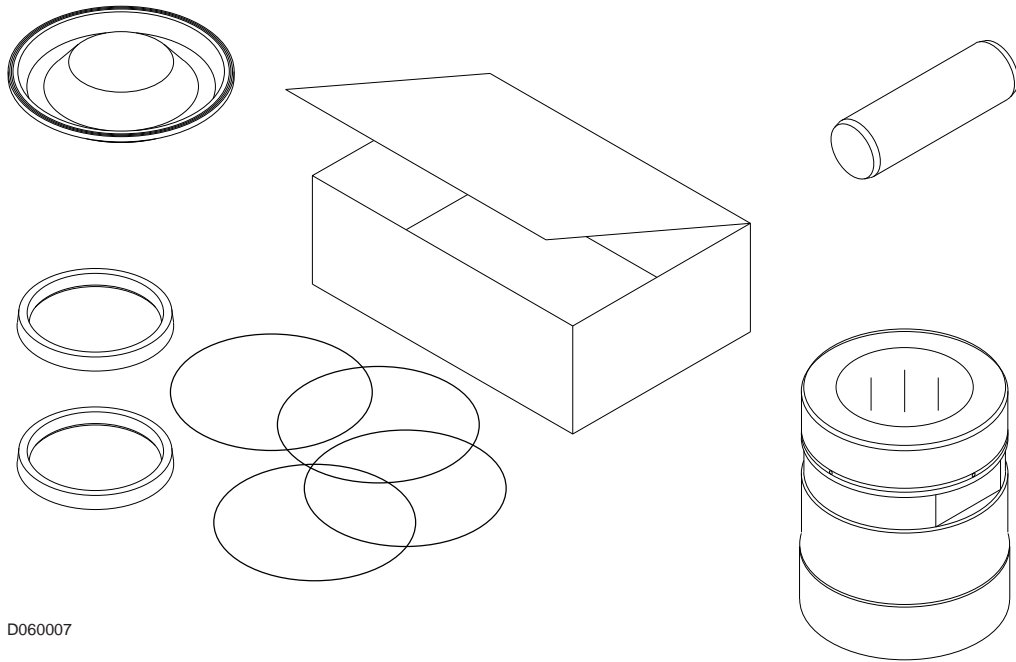
Item	Description	Part no.	Specification	Note	Qty
Kit	Seal set (incl. parts 1-10)	171546			1
1	O-ring	953592			1
2	Wiper	954266			1
3	Seal	954261			1
4	Seal	954267			1
5	O-ring	954276			3
6	O-ring	954250			1
7	O-ring	954252			1
8	Seal	954263			2
9	Seal	954258			1
10	O-ring	954255			3

4. SERVICE KIT

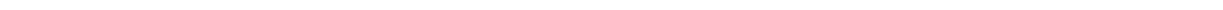
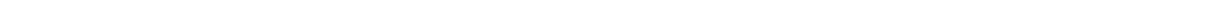
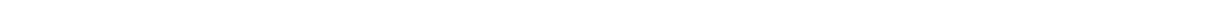
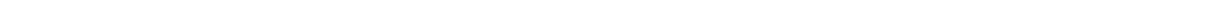
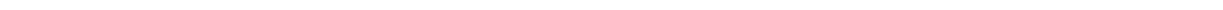
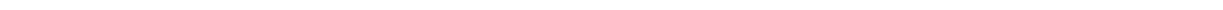
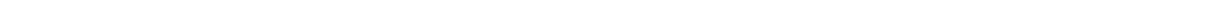
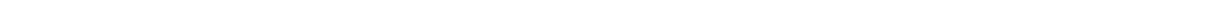
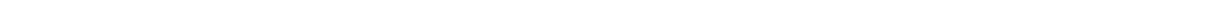
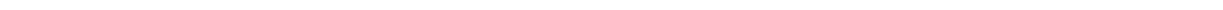
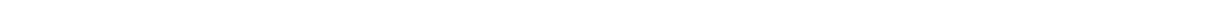
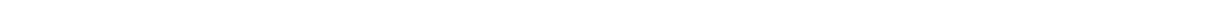
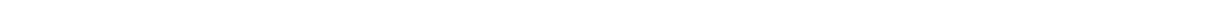
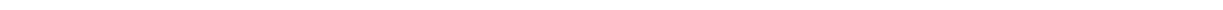
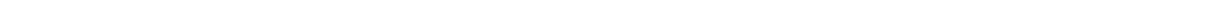
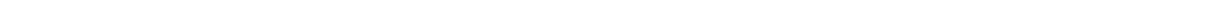
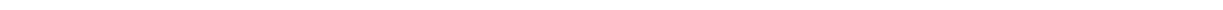


Item	Description	Part no.	Specification	Note	Qty
Kit	Servicekit (incl. parts 1 - 3)	K10B15			1
1	Lower tool bushing	170351			1
2	Tool retaining pin	170580			2
3	Seal set	171546			1

5. SERVICE KIT 2



Item	Description	Part no.	Specification	Note	Qty
Kit	Servicekit (incl. parts 1 - 1)	K20B15			1
1	Upper tool bushing	170348			1



A page of lined paper with horizontal lines for writing. The lines are evenly spaced and extend across the width of the page. There are approximately 28 lines in total, with a thicker blue line at the top and bottom.



Handwriting practice area with 25 horizontal lines.



© 2013 Sandvik
All rights reserved.

36-24-14091-27-8-231
36-24-14091-27-184-231

www.bretec.com