

HYDRAULIC BREAKER

Parts Manual

PMC2BSENG.613

Serial No.

BT02A0005-UP

The logo for Brettec C2 is displayed vertically on a dark blue background. The word "Brettec" is written in a bold, white, sans-serif font. The number "2" is written in a bold, red, sans-serif font. A red triangle is positioned to the left of the "B", pointing towards the "r".

Brettec C2

TABLE OF CONTENTS

1. Housing unit BOX	4
2. Impact unit	6
3. Seal set	8
4. Service kit	10
5. Service kit 2	11

GENUINE BRETEC SPARE PARTS

Bretec genuine spare parts are designed and manufactured by using the latest technological knowledge and engineering skills. Bretec spare parts are made of the best available materials with the most advanced manufacturing techniques.

It is important that you use only genuine Bretec spare parts, to ensure easy operation, maintenance and repair of the product. Please note that eventual warranty claims will be handled only if you have used genuine Bretec parts in your Bretec product.

LOCATION OF THE SERIAL NUMBER

It's important to make correct reference to the serial number of the product when ordering spare parts. Identification of serial number is the only proper means of maintaining and identifying parts for a specific product. The location of equipment serial number is pointed in "Operation and maintenance" manual.

SPARE PART ORDERS

Quick spare part deliveries are secured by exact orders.

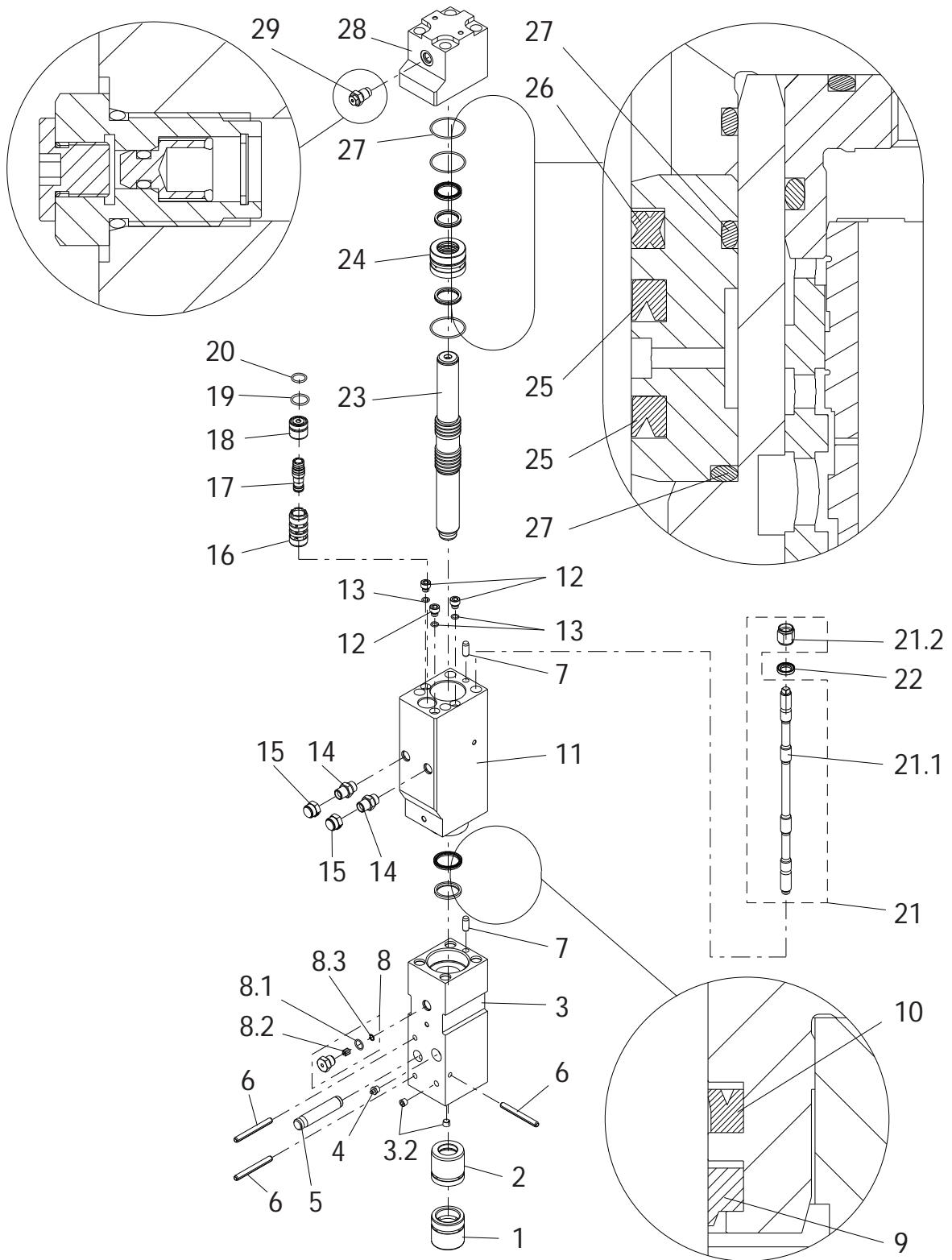
Required information:

- Name of customer and contact person
 - Order number (when available)
 - Delivery address
 - Mode of delivery (air mail etc.)
 - Required delivery date
 - Invoicing address
 - Model and serial number of the product
 - Name, number and required amount of spare parts
-

1. Parts

Item	Description	Part no.	Specification	Note	Qty
1	Housing	171578			1
2	Pad	170144			1
3	Buffer	170145			1
4	Wear plate	170148			1
5	Wear plate	170149			1
6	Wear plate	170147			1
7	Wear plate	170146			1
8	Wear plate	170150			2
9	Wear plate	170536			1
10	Cover	170151			1
11	Rubber plug	170153			3
12	Rubber plug	170156			1
13	Rubber plug	170155			2
14	Rubber plug	170154			2
15	Rubber plug	170152			2
16	Hex. socket screw	91045	M12x30-8.8 ISO 4762		4
17	Spring washer	91018	A12 DIN 127		4
18	Washer	903211	12-140 HV ISO 7089		4
19	Lifting eye	90607	M12 DIN 580		1
20	Hex. screw	91088	M12x20-8.8 ISO 4017		1
21	Hex. screw	90544	M16x60-8.8 ISO 4014		10
22	Lock washer	90597	M16 NORD-LOCK		20
23	Nut	91000	M16-8 ISO 4032		10
100	Label set (incl. part 101)	171508			1
101	Safety label set	169400	english		1

2. IMPACT UNIT

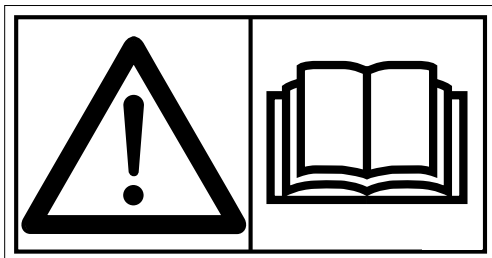
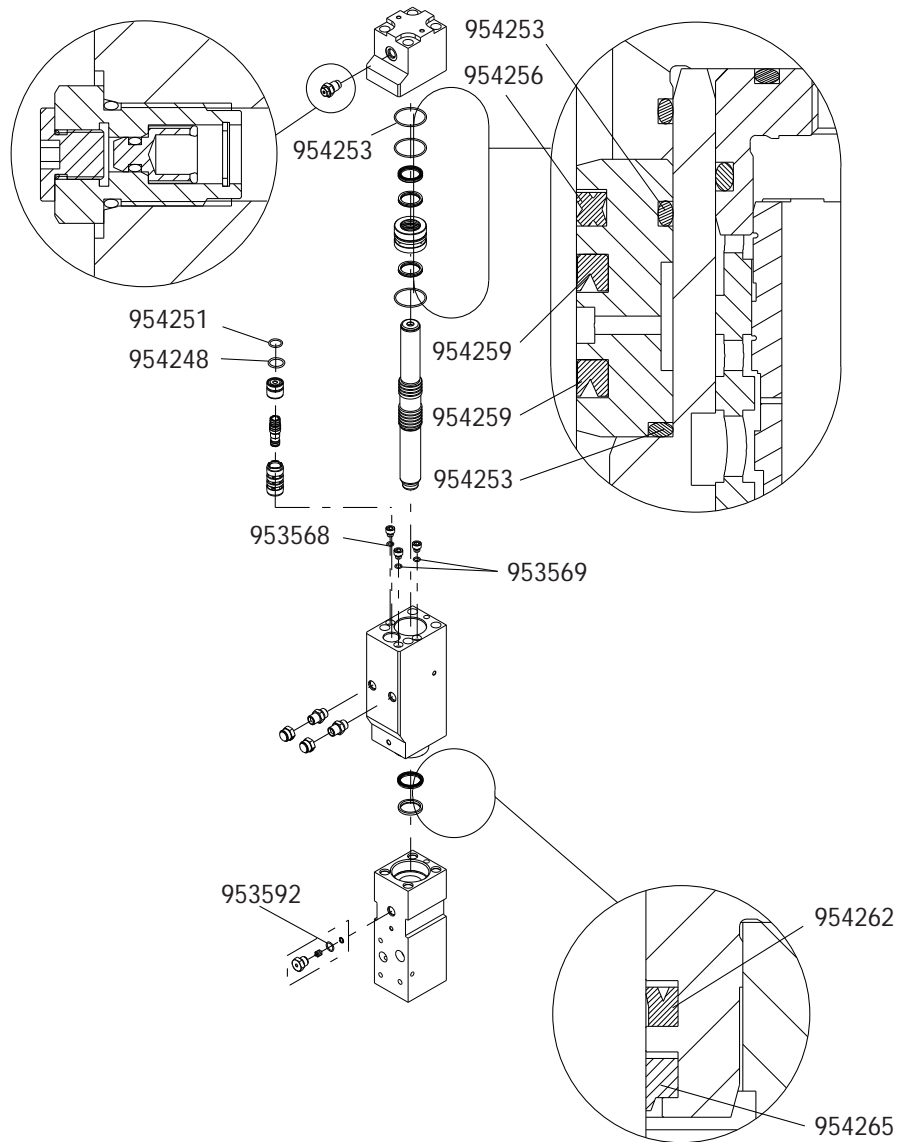


BA060023

Item	Description	Part no.	Specification	Note	Qty
1	Lower tool bushing	170349			1
2	Upper tool bushing	170346			1
3	Front head (incl. part 3.2)	170337			1
3.2	Plug	93125			2
4	Grease nipple	90200			1
5	Tool retaining pin	170591			1
6	Split pin	904015	10x100 ISO 8752		3
7	Parallel pin	170592			2
8	Breather (incl. parts 8.1-8.3)	171440			1
8.1	O-ring	953592		*	1
8.2	Spool	171442			1
8.3	Retaining ring	953371	12x1 DIN 472		1
9	Wiper	954265		*	1
10	Seal	954262		*	1
11	Cylinder	170334			1
12	Plug	170190			3
13	O-ring	953568		*	3
14	Adapter	951849			2
15	Cap	953672			2
16	Bushing	171407			1
17	Distributor	171406			1
18	Distributor cover	171408			1
19	O-ring	954248		*	1
20	O-ring	954251		*	1
21	Tie rod (incl. parts 21.1-21.2)	K50B02			4
21.1	Tie rod				1
21.2	Nut				1
22	Washer	170511			4
23	Piston	170343			1
24	Seal carrier	170340			1
25	Seal	954259		*	2
26	Seal	954256		*	1
27	O-ring	954253		*	3
28	Back head	170331			1
29	Accumulator filling plug	171443			1
	*) Are included in seal set				

3. SEAL SET

Seal set 171544

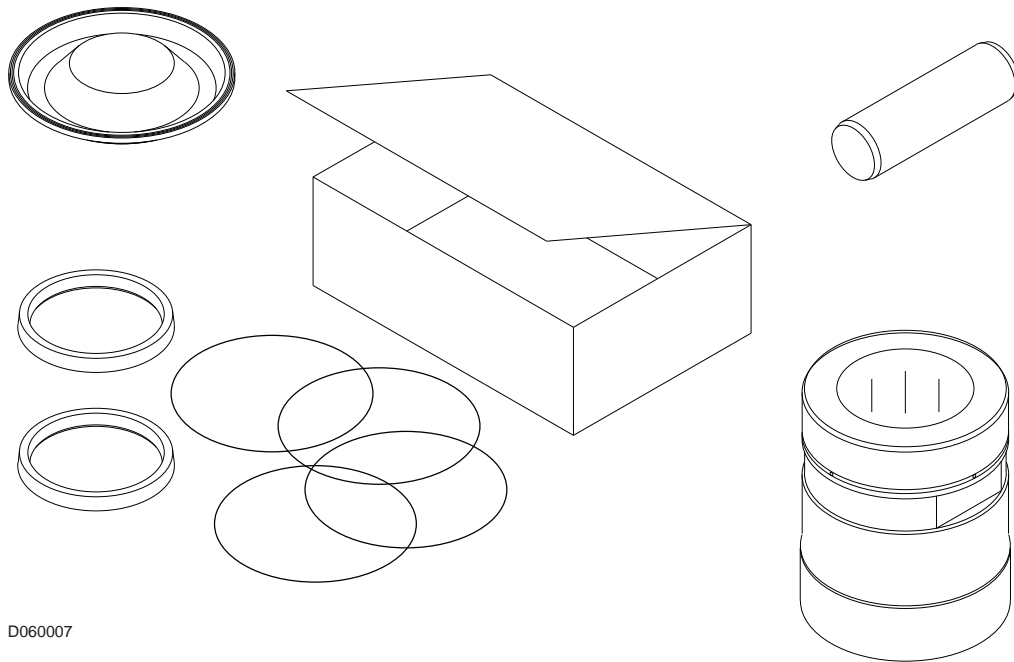


This summary only indicates the position of the seals. It must NOT be used as assembly instruction. Read the manual.

BA060024

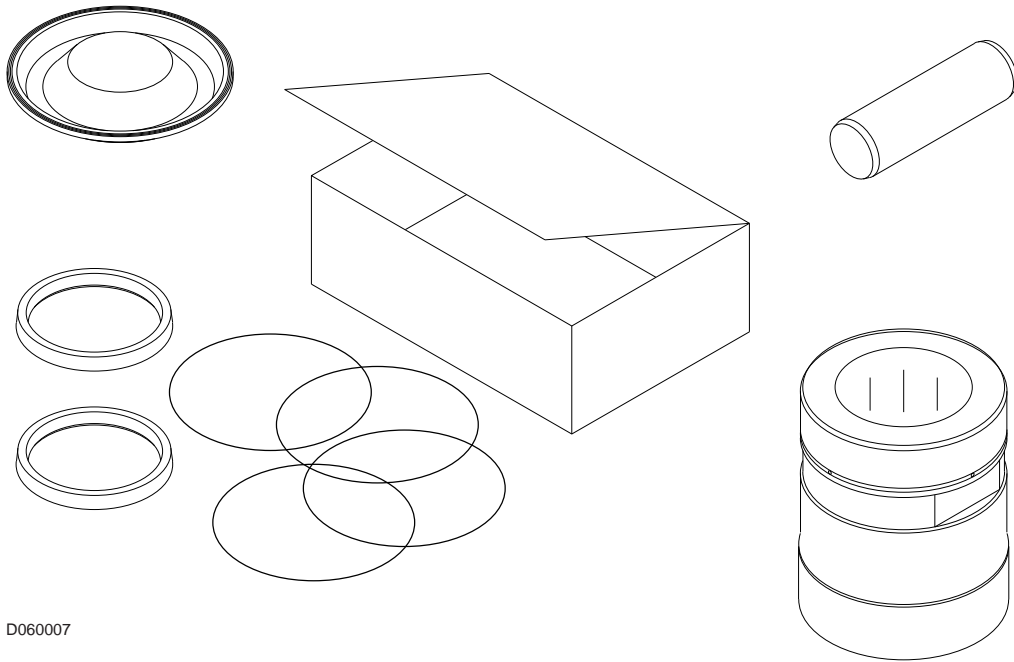
Item	Description	Part no.	Specification	Note	Qty
Kit	Seal set (incl. parts 1-9)	171544			1
1	O-ring	953592			1
2	Wiper	954265			1
3	Seal	954262			1
4	O-ring	953568			3
5	O-ring	954248			1
6	O-ring	954251			1
7	Seal	954259			2
8	Seal	954256			1
9	O-ring	954253			3

4. SERVICE KIT



Item	Description	Part no.	Specification	Note	Qty
Kit	Servicekit (incl. parts 1 - 3)	K10B02			1
1	Lower tool bushing	170349			1
2	Tool retaining pin	170591			1
3	Seal set	171544			1

5. SERVICE KIT 2



Item	Description	Part no.	Specification	Note	Qty
Kit	Servicekit (incl. parts 1 - 9)	K20B02			1
1	Pad	170144			1
2	Buffer	170145			1
3	Wear plate	170148			1
4	Wear plate	170149			1
5	Wear plate	170147			1
6	Wear plate	170146			1
7	Wear plate	170150			2
8	Wear plate	170536			1
9	Upper tool bushing	170346			1



© 2013 Sandvik
All rights reserved.

36-24-14091-27-8-231
36-24-14091-27-84-252

www.bretec.com