

HYDRAULIC BREAKER

Parts Manual

PMC3BSENG.613

Serial No.

BT03A0005-UP



TABLE OF CONTENTS

| | |
|---------------------------|----|
| 1. Housing unit BOX | 4 |
| 2. Impact unit | 6 |
| 3. Seal set | 8 |
| 4. Service kit | 10 |
| 5. Service kit 2 | 11 |

GENUINE BRETEC SPARE PARTS

Bretec genuine spare parts are designed and manufactured by using the latest technological knowledge and engineering skills. Bretec spare parts are made of the best available materials with the most advanced manufacturing techniques.

It is important that you use only genuine Bretec spare parts, to ensure easy operation, maintenance and repair of the product. Please note that eventual warranty claims will be handled only if you have used genuine Bretec parts in your Bretec product.

LOCATION OF THE SERIAL NUMBER

It's important to make correct reference to the serial number of the product when ordering spare parts. Identification of serial number is the only proper means of maintaining and identifying parts for a specific product. The location of equipment serial number is pointed in "Operation and maintenance" manual.

SPARE PART ORDERS

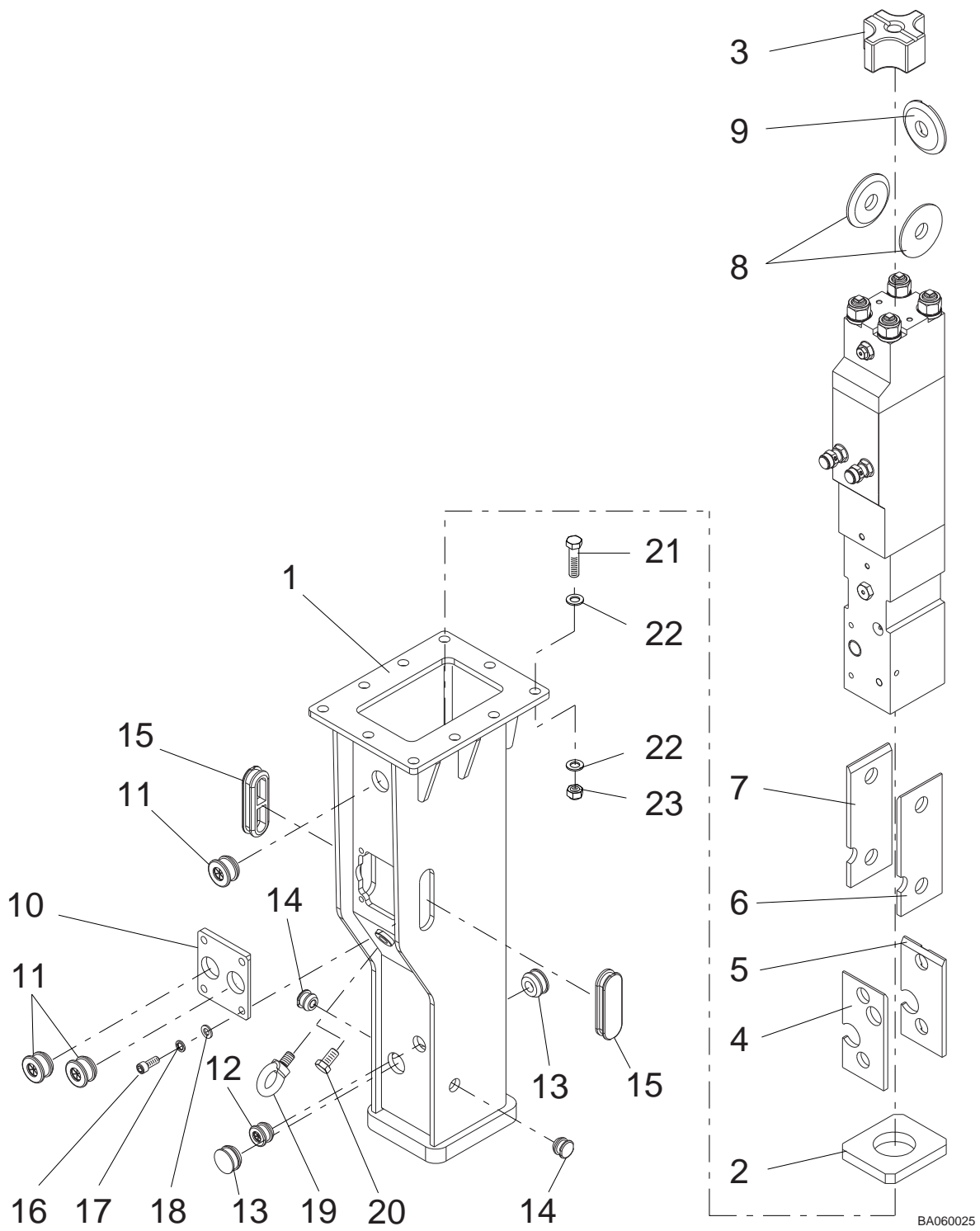
Quick spare part deliveries are secured by exact orders.

Required information:

- Name of customer and contact person
 - Order number (when available)
 - Delivery address
 - Mode of delivery (air mail etc.)
 - Required delivery date
 - Invoicing address
 - Model and serial number of the product
 - Name, number and required amount of spare parts
-

1. Parts

1. HOUSING UNIT BOX



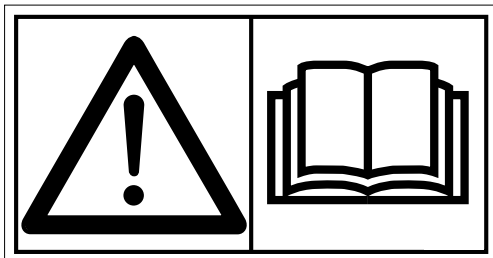
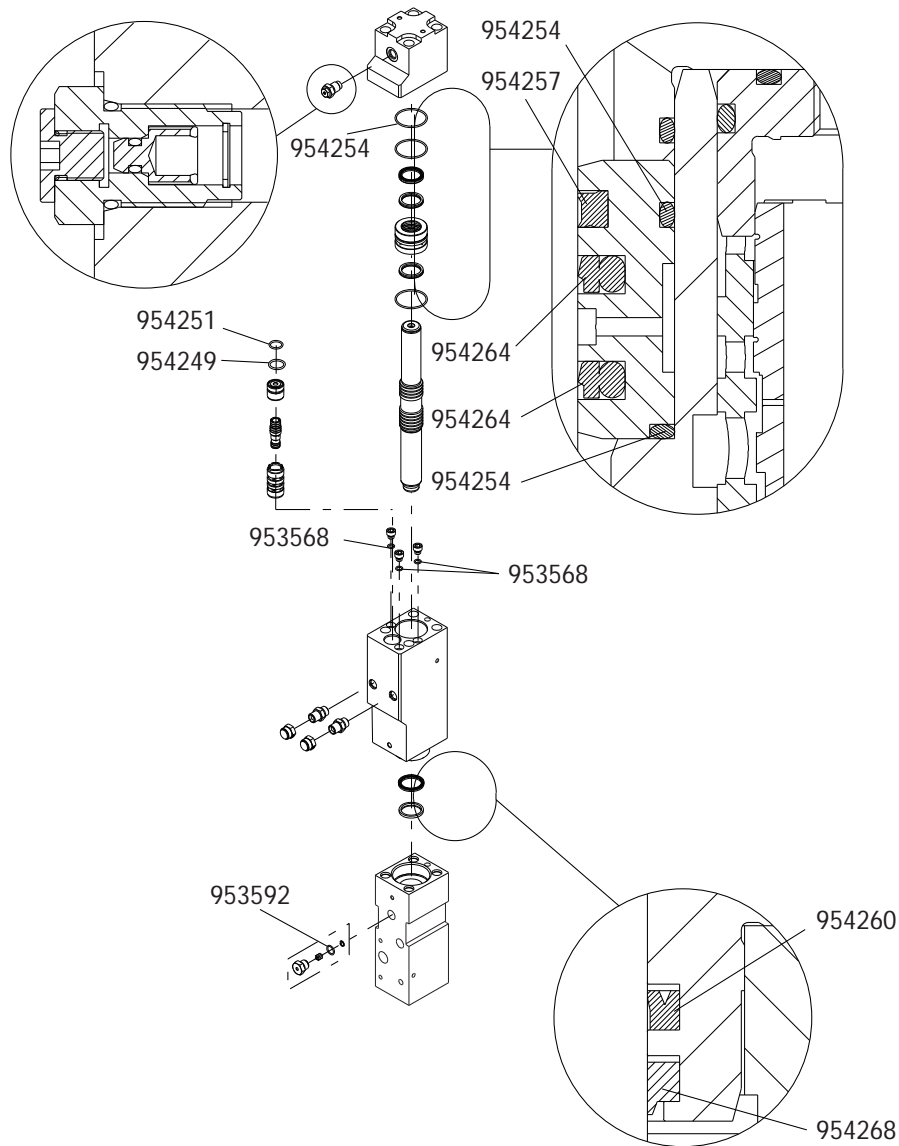
BA060025

| Item | Description | Part no. | Specification | Note | Qty |
|------|----------------------------|----------|---------------------|------|-----|
| 1 | Housing | 171579 | | | 1 |
| 2 | Pad | 170159 | | | 1 |
| 3 | Buffer | 170160 | | | 1 |
| 4 | Wear plate | 170163 | | | 1 |
| 5 | Wear plate | 170164 | | | 1 |
| 6 | Wear plate | 170162 | | | 1 |
| 7 | Wear plate | 170161 | | | 1 |
| 8 | Wear plate | 170165 | | | 2 |
| 9 | Wear plate | 170537 | | | 1 |
| 10 | Cover | 170166 | | | 1 |
| 11 | Rubber plug | 170153 | | | 3 |
| 12 | Rubber plug | 170156 | | | 1 |
| 13 | Rubber plug | 167139 | | | 2 |
| 14 | Rubber plug | 170154 | | | 2 |
| 15 | Rubber plug | 170152 | | | 2 |
| 16 | Hex. socket screw | 91045 | M12x30-8.8 ISO 4762 | | 4 |
| 17 | Spring washer | 91018 | A12 DIN 127 | | 4 |
| 18 | Washer | 903211 | 12-140 HV ISO 7089 | | 4 |
| 19 | Lifting eye | 90690 | M16 DIN 580 | | 1 |
| 20 | Hex. screw | 90514 | M16x30-8.8 ISO 4017 | | 1 |
| 21 | Hex. screw | 90544 | M16x60-8.8 ISO 4014 | | 10 |
| 22 | Lock washer | 90597 | M16 NORD-LOCK | | 20 |
| 23 | Nut | 91000 | M16-8 ISO 4032 | | 10 |
| | | | | | |
| 100 | Label set (incl. part 101) | 171510 | | | 1 |
| 101 | Safety label set | 169400 | english | | 1 |

| Item | Description | Part no. | Specification | Note | Qty |
|------|----------------------------------|----------|-----------------|------|-----|
| 1 | Lower tool bushing | 170350 | | | 1 |
| 2 | Upper tool bushing | 170347 | | | 1 |
| 3 | Front head (incl. parts 3.2-3.3) | 170338 | | | 1 |
| 3.2 | Plug | 93125 | | | 1 |
| 3.3 | Plug | 111399 | | | 1 |
| 4 | Grease nipple | 90200 | | | 1 |
| 5 | Tool retaining pin | 170589 | | | 1 |
| 6 | Split pin | 904015 | 10x100 ISO 8752 | | 3 |
| 7 | Parallel pin | 170590 | | | 2 |
| 8 | Breather (incl. parts 8.1-8.3) | 171440 | | | 1 |
| 8.1 | O-ring | 953592 | | * | 1 |
| 8.2 | Spool | 171442 | | | 1 |
| 8.3 | Retaining ring | 953371 | 12x1 DIN 472 | | 1 |
| 9 | Wiper | 954268 | | * | 1 |
| 10 | Seal | 954260 | | * | 1 |
| 11 | Cylinder | 170335 | | | 1 |
| 12 | Plug | 170190 | | | 3 |
| 13 | O-ring | 953568 | | * | 3 |
| 14 | Adapter | 951849 | | | 2 |
| 15 | Cap | 953672 | | | 2 |
| 16 | Bushing | 171410 | | | 1 |
| 17 | Distributor | 171409 | | | 1 |
| 18 | Distributor cover | 171411 | | | 1 |
| 19 | O-ring | 954249 | | * | 1 |
| 20 | O-ring | 954251 | | * | 1 |
| 21 | Tie rod (incl. parts 21.1-21.2) | K50B03 | | | 4 |
| 21.1 | Tie rod | | | | 1 |
| 21.2 | Nut | | | | 1 |
| 22 | Washer | 170512 | | | 4 |
| 23 | Piston | 170344 | | | 1 |
| 24 | Seal carrier | 170341 | | | 1 |
| 25 | Seal | 954264 | | * | 2 |
| 26 | Seal | 954257 | | * | 1 |
| 27 | O-ring | 954254 | | * | 3 |
| 28 | Back head | 170332 | | | 1 |
| 29 | Accumulator filling plug | 171443 | | | 1 |
| | *) Are included in seal set | | | | |

3. SEAL SET

Seal set 171545

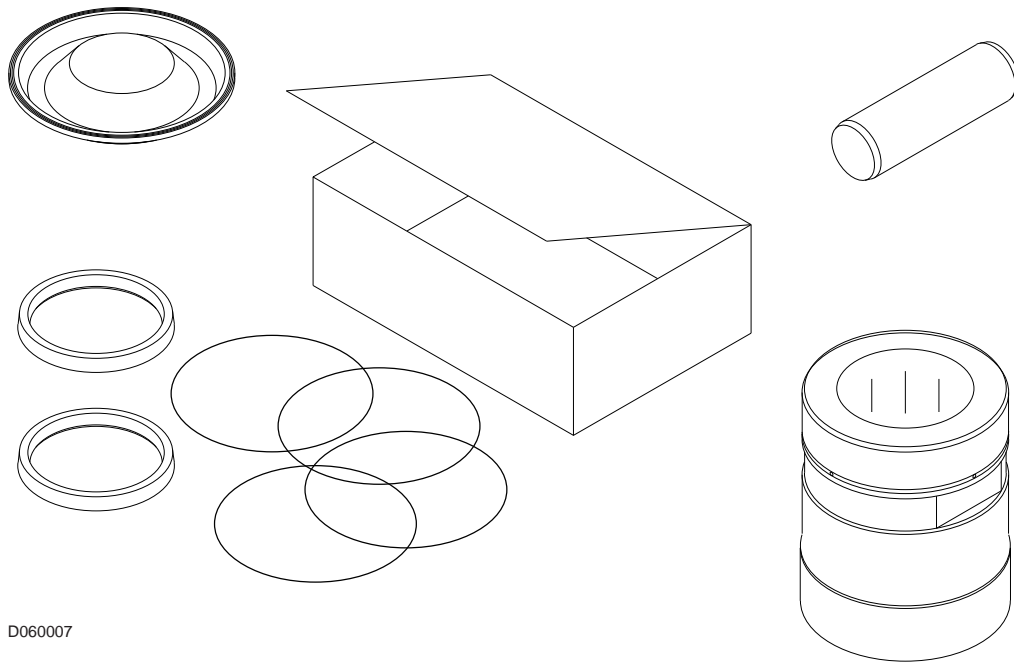


This summary only indicates the position of the seals. It must NOT be used as assembly instruction. Read the manual.

BA060027

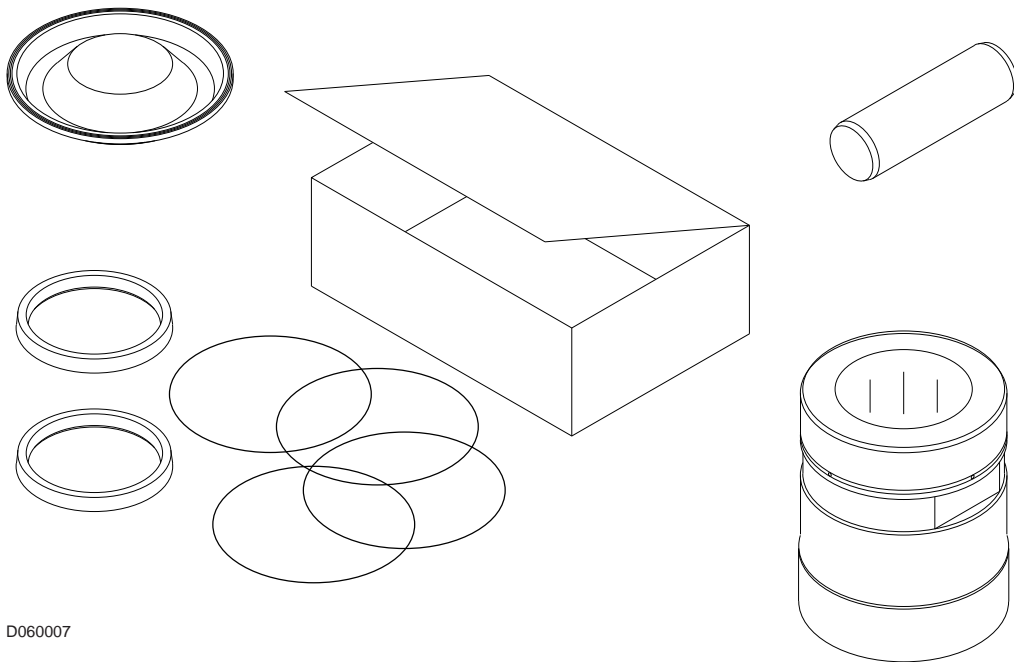
| Item | Description | Part no. | Specification | Note | Qty |
|------|----------------------------|----------|---------------|------|-----|
| Kit | Seal set (incl. parts 1-9) | 171545 | | | 1 |
| 1 | O-ring | 953592 | | | 1 |
| 2 | Wiper | 954268 | | | 1 |
| 3 | Seal | 954260 | | | 1 |
| 4 | O-ring | 953568 | | | 3 |
| 5 | O-ring | 954249 | | | 1 |
| 6 | O-ring | 954251 | | | 1 |
| 7 | Seal | 954264 | | | 2 |
| 8 | Seal | 954257 | | | 1 |
| 9 | O-ring | 954254 | | | 3 |

4. SERVICE KIT



| Item | Description | Part no. | Specification | Note | Qty |
|------|--------------------------------|----------|---------------|------|-----|
| Kit | Servicekit (incl. parts 1 - 3) | K10B03 | | | 1 |
| 1 | Lower tool bushing | 170350 | | | 1 |
| 2 | Tool retaining pin | 170589 | | | 1 |
| 3 | Seal set | 171545 | | | 1 |

5. SERVICE KIT 2



| Item | Description | Part no. | Specification | Note | Qty |
|------|--------------------------------|----------|---------------|------|-----|
| Kit | Servicekit (incl. parts 1 - 9) | K20B03 | | | 1 |
| 1 | Pad | 170159 | | | 1 |
| 2 | Buffer | 170160 | | | 1 |
| 3 | Wear plate | 170163 | | | 1 |
| 4 | Wear plate | 170164 | | | 1 |
| 5 | Wear plate | 170162 | | | 1 |
| 6 | Wear plate | 170161 | | | 1 |
| 7 | Wear plate | 170165 | | | 2 |
| 8 | Wear plate | 170537 | | | 1 |
| 9 | Upper tool bushing | 170347 | | | 1 |



© 2013 Sandvik
All rights reserved.

21-24-14091-33-76-168
36-24-14091-24-180-294

www.bretec.com